

 **ENVIRONMENTAL PROTECTION HINT!**

Environmental Protection Hint!

One tiny button cell can pollute 500 tons of water,  
which is equal to a lifetime water intake of one person.



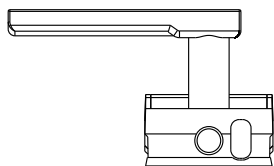
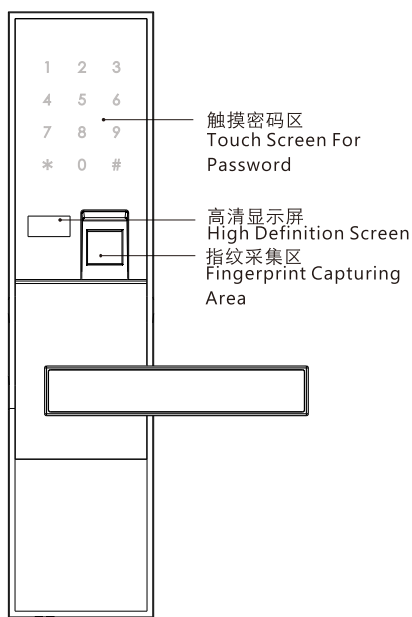
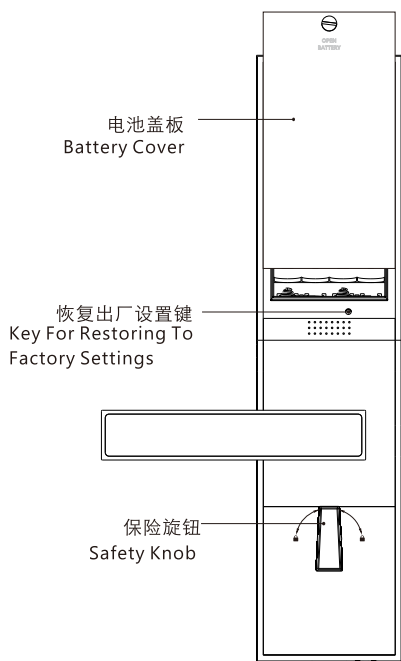
**SAFETY**

INTELLIGENCE

TOUCH OF GLORY

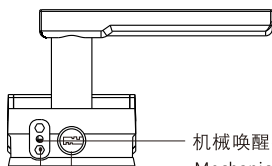
***Wulian***<sup>®</sup>





应急电源接口  
Emergency Power Interface

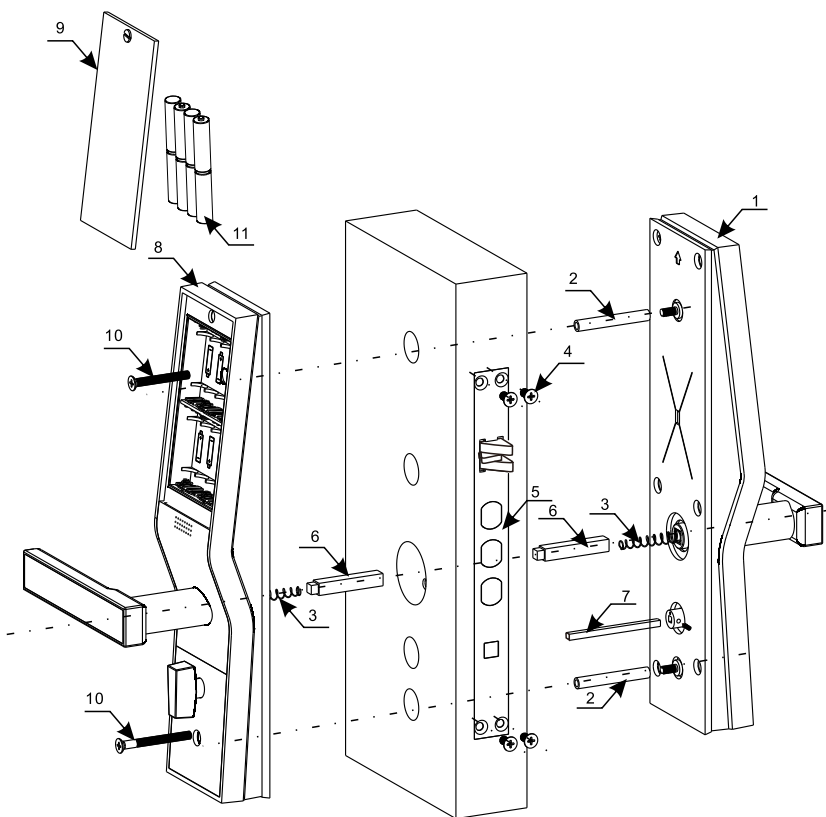
内面板  
INNER PANEL



机械唤醒按键  
Mechanical wake-up button

机械钥匙孔  
Mechanical Key Hole

外面板  
OUTER PANEL



安装爆炸图 (爆炸图只做参考)

Exploded Drawing For Installation (for Reference Only)

- |                 |   |
|-----------------|---|
| 1.外面板(1只)       | 1.Outer Panel X1                                |
| 2.连接螺栓(2根)      | 2.Connecting Bolt X2                            |
| 3.方轴压簧(2根)      | 3.Pressure Spring Of Square Shafts X2           |
| 4.锁体固定螺丝(4枚)    | 4.Lock Body Set Screw X4                        |
| 5.锁体(1个)        | 5.Lock Body X1                                  |
| 6.大方轴(2根)       | 6.Big Square Shaft X2                           |
| 7.小方轴(1根)       | 7small Square Shaft X1                          |
| 8.内面板(1只)       | 8.Inner Panel X1                                |
| 9.电池盖板(1片)      | 9.Battery Cover X1                              |
| 10.内外面板连接螺丝(2枚) | 10.Coupling Screw For Inner And Outer Panels X2 |
| 11.电池           | 11.battery                                      |

## CATALOG

Illustrations For Your Product

How To Install Your Smart Lock

How To Use The Fingerprint Password Lock

How To Use Your Password Card Lock

Advanced Features And Emergency Application

ENGLISH  
PG 1-15

简体中文  
PG 16-27

■ 中国 □ 한국 □ Sweden ■ English

## CONFIGURATION LIST

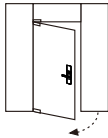
When Unpacking, please Check Carefully In Accordance With The List. If Anything Is Missing, Please Ask Us Or Our Agents For It.

Serial No.	Description	Quantity/lock	Remark
<b>1</b>	Outer Panel	1	
<b>2</b>	Inner Panel	1	
<b>3</b>	Lock Body	1	
<b>4</b>	Mechanical Key	2	
<b>5</b>	User Manual	1	
<b>6</b>	Warranty Card	1	
<b>7</b>	Installation Kit Package	1	
<b>8</b>	No.5 Battery	4	

# INSTALLATION OF SMART LOCK

## 1 Judgment Of Door Opening Direction

Judge Opening Direction Of Your Door In Accordance With The Following Diagram.



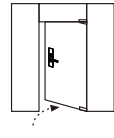
opening outward to the left



opening inward to the left



opening outward to the right



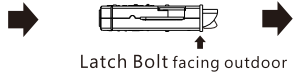
opening inward to the right

## 2 Selection Of Smart Lock

This Smart Lock Features The Function Fo Four Directions Integrated Into One And Can Be Used On Doors Opening Outward To The Right,opening Inward To The Right,opening Outward To The Left And Opening Inward To The Left With Proper Adjustment.



opening inward to the left

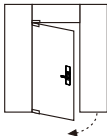


fixed directional screw facing indoor

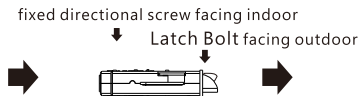
Latch Bolt facing outdoor



select the panel with a left-hand handle



opening outward to the left

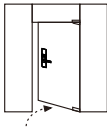


fixed directional screw facing indoor

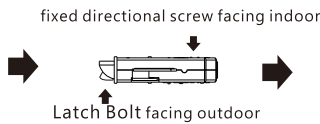
Latch Bolt facing outdoor



select the panel with a left-hand handle

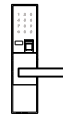


opening inward to the right

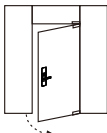


fixed directional screw facing indoor

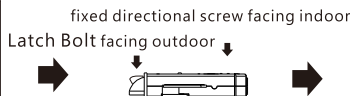
Latch Bolt facing outdoor



select the panel with a right-hand handle

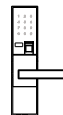


opening outward to the right



fixed directional screw facing indoor

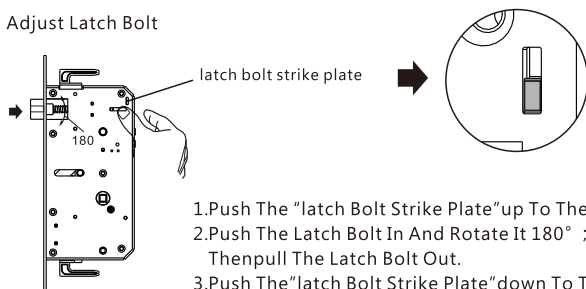
Latch Bolt facing outdoor



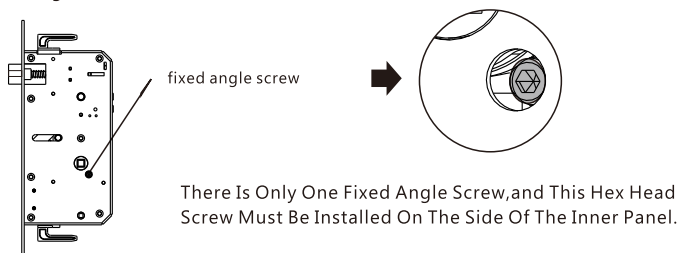
select the panel with a right-hand handle

### 3 Adjust smart lock

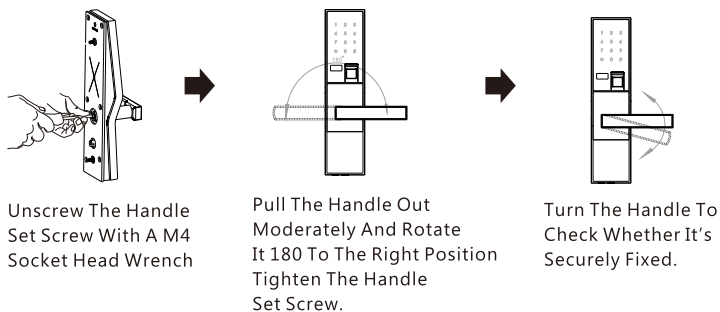
#### 3.1 Adjust Latch Bolt



#### 3.2 Locating Screw

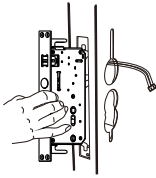


#### 3.3 Adjust The Handle

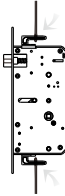


## 4 Installation of Smart Lock

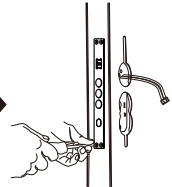
### 4.1 Installation Lock Body



Place The Lock Body Into The Door Leaf Processed To The Specified Dimension Pull The Connection Lines Of Lock Body Inner And Outer Panels Through The Two Sides Of The Door In Accordance With Indications On The Tag.



When Inserting The Lock Body, hook The Upper And Lower Bolt.

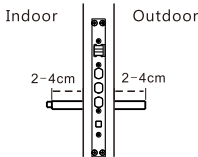


Tighten The Four Set Screws On The Lock Body.

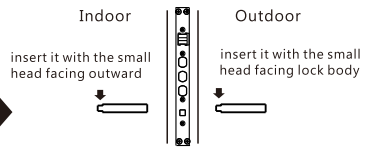
#### Notes

The Connection Lines Are Divided Into The Internal And The External. please Select The Right Line To Pull Through The Two Sides Of The Door According To Indications Onthe Tag . Please Do Not Make A Misake

### 4.2 Insert The Square Shaft

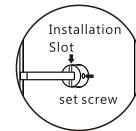
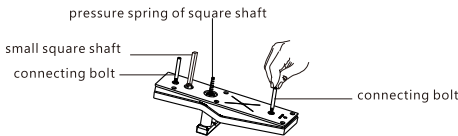


Select Big Square Shafts Of Appropriate Length (shafts Shall Have A Length Which Will Have 2-4cm Left Outside Two Faces Of The Door When The Lock Body Is Inserted)

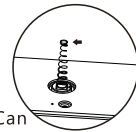


Insert The Big Square Shafts With Them Facing The Correct Directions.

### 4.3 Install Outer Panel

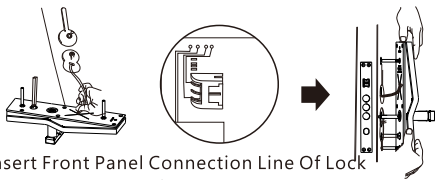


the installation slot shall be placed vertical.



small head for the pressure spring facing outward

1. Screw In Two Connecting Bolts Into The Outer Panel.
2. Then Insert The 4x4 Mechanical Key Small Square Shaft And Tighten The Small Square Shaft With Set Screws (it Will Be Appropriate When The Small Shaft Can Be Inserted Into The Lock Body For 1-2cm; cut It If It, s Too Long)
3. Place The Square Shaft Pressure Spring Into The Opening For Square Shaft Of The Handle (with Small Head Of The Spring Facing Outward)



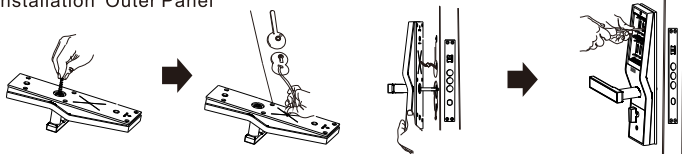
Insert Front Panel Connection Line Of Lock Body Into The Interfacd On The Front Panel

With Opening For Outer Panel Handle Pointing Toward The Big Square Shaft And Small Square Shaft Towared Mechanical Key Opening , Insert Them Together.

### Notes

The Connection Lines Are Divided Into The Internal And The External.please Select The Right Line To Insertaccording To Indications On The Tag. Please Do Not Make A Mistake.

#### 4.4 Installation Outer Panel



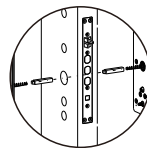
Place The Pressure Spring In The Opening For Square Shaft Of The Inner Panel Handle With Small Head Of The Spring Facing Out Ward.

Insert Inner Panel Connection Line Of Lock Body Into The Interface Of The Inner Panel; When They Are Securely Connected Insert The Inner Panel With Inner Panel Handle Opening Pointed Toward The Big Square Shaft On The Lock Body.

Press The Inner And Outer Panels Tightly Close To The Door And Tighten The Two Coupling Screws For Inner And Outer Panels.

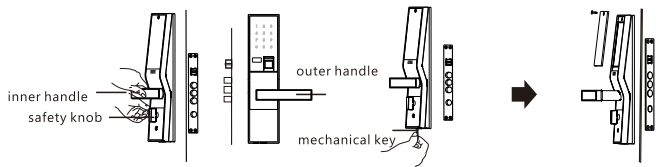
### Notes

Because The Two Square Shafts Of The Smart Lock Are Inserted From The Front And The Back Aligned With Each Other,that The Three Holes Of Square Shaft Holes And Square Shaft Hole Of The Lock Body Stay Concentric Is Very Important.since It Will Directly Influence Turning Of The Handle Concentric Of The Three Holes Shall Be Paid Special Attention To.



three concentric holes

#### 4.5 Installation Completed



Turn The Inner And Outer Handles,the Safety Knob And The Mechanical Key To Check Whether Each Part Is Connected Properly.

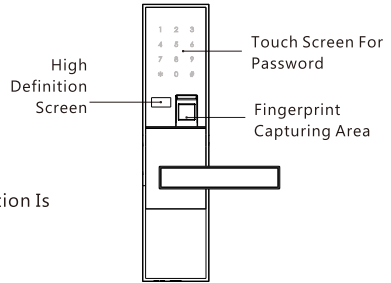
Install The Battery And Cover The Battery Cover Now Installation Of The Smart Lock Is Finished.

# USE OF SMART LOCK

## Fingerprint Password Lock

- 5.1 Unlock With Password  
Touch a few disc wake fingerprint lock;  
Enter The Password And The Door Will  
Open With Successful Validation

- 5.2 Unlock with Fingerprint  
The Door Will Open If Fingerprint Validation Is  
Successful.



### Notes

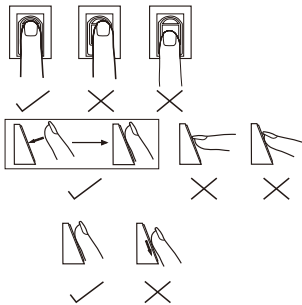
When Unlocking With Fingerprint Or Password, If Incorrect Passwords Or Fingerprints Are Continuously Entered 10 Times (total Of The Two) Within 5 Minutes, the System Will Be Locked For 5 Minutes (if Any Operation Is Conducted Within This Time Period, the System Will Prompt: system Locked); Input Of Any Password Or Any Other Operation Within The Period When The System Is Locked Will Restore The Lock Time To The Maximum Lock Time; do Not Enter Anything, and It Can Return To Normal Use After 5 Minutes.

### About The Dummy Digit Password

Peep-proof Password Protection Function: To Avoid Peep From Others, Any Figure Can Be Added Before The Valid Password When Entering The Password (the Total Length Shall Not Exceed 32 digits And There Will Be Automatic Overflow If It Exceeds 32 Digits), and It Can Be Unlocked With Successful Validation.

### Essentials For Fingerprint Input

When Collecting And Verifying The Fingerprint, Please Place The Finger Correctly.  
Method: Put Your Finger On The Fingerprint Capturing Area With Moderate Force.  
Try To Put It Flat, as Shown In The Following Figure:



1. Place Your Finger On The Center Of The Fingerprint Capturing Area.

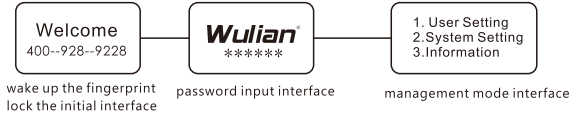
2. Press Surface Of Your Finger With Fingerprint Gently Onto The Capturing Area To Fit Closely.

3. Keep Your Fingerprint Stable And Maintain For A Moment.

### 5.3 Set Your Fingerprint Password Lock

#### How Enter The Management Mode

Method 1: To Wake Up The Fingerprint Lock; Press "\*" And Enter The Unlocking Password And The Two-digit Administrative Password; Then Press "#" To Confirm And Enter The Management Mode.



#### Notes

Default Password Is 123456; Administrative Password Is 00 (for Your Safety, Please Change Timely In Your Initial Use).

Method 2: wake up the fingerprint lock, press \* key Enter the administrator of fingerprint ,Into the management model.

### 5.4 Add Fingerprint

Enter Management Mode And Press 1 To Select User Management.

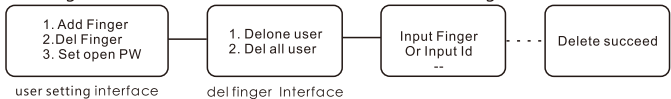


#### Notes

1. In The Input Fingerprint Number:  
01-10 fingerprint for the management of fingerprint;  
11-50 fingerprint for master fingerprint;  
51-90 fingerprint for the guests to fingerprint.  
2. Fingerprint Capacity Is 99 Pieces.

### 5.5 Delete Fingerprints

Enter Management Mode And Press 1 To Select User Management.

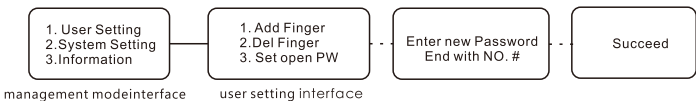


#### Notes

To Delete All User Fingerprints Will Delete All Common User Fingerprints (i.e., Fingerprints Numbered 11-99) But Will Not Delete Administrator Fingerprints. Administrator Fingerprints Can Be Deleted Individually.

### 5.6 Change unlocking password

Enter Management Mode And Press 1 To Select User Management.

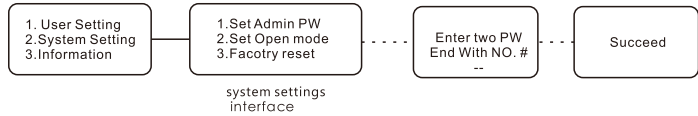


#### Notes

Enter two in the modification process (the password can be set to 4-8 for any number).

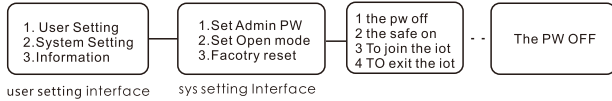
### 5.7 Change Administrative Password

Enter Management Mode And Press 2 To Select System Management.



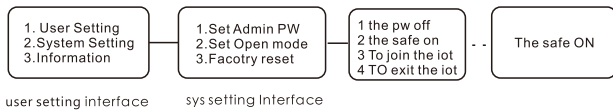
### 5.8 Open/Close Door Password

Enter Management Mode And Press 2 To Select System Management.



### 5.9 Open/Close Safe mode

Enter Management Mode And Press 2 To Select System Management.

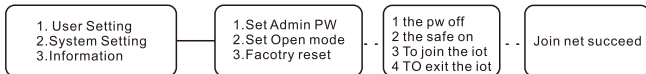


#### Notes

1. when no fingerprints or close the door password, can not open the safe mode..
2. Safe mode, clear all fingerprint or password, will Exit safe mode.

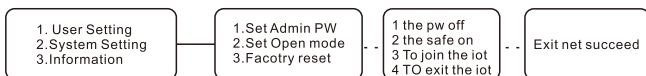
### 5.10 Application join Internet of things

Enter the management mode according to button 2 choose system setting, and then press button 2 again to choose open mode, at last press button 3 into join the internet of things



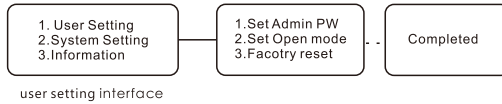
### 5.11 Application Exit the Internet of things

Enter the management mode according to button 2 choose system setting, and then press button 2 again to choose open mode, at last press button 4 to exit the internet of things .



5. 12 Restore To Factory Settings

Enter Management Mode And Press 2 To Select System Management; Then Press 3 To Select Restore To Factory Settings .



**Notes**

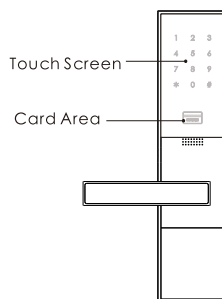
When Factory Settings Are Restored, The Unlocking Password Will Be Restored To "1234546" And The Administrative Password Will Be Restored To "00"; All The Fingerprints Or Cards Already Added Will Be Deleted And Shall Be Added Again.

5. 13 Information Query

Enter Management Mode And Press 3 To Select Information Query. Then In The Pull-down Menu Select 1 To Inquire About Quantity Of Fingerprints; Press 2 To Inquire About System Version And Press 3 To Inquire About After-sales Support .



## Password Card Lock



### 6.1 In Common Mode

#### Unlock With Passwords

Wake Up The Smart Lock By Touching.  
The Door Can Be Opened When Password  
Validation Is Successful.

#### Unlock With Card

The Door Can Be Opened When  
Validation By Swiping Card Is Successful.

#### Notes

This Lock Has The Same Anti-peep Function Of Dummy Digit Password As The Fingerprint Password Lock.

### 6.2 Unlock In Safe Mode

#### Wake Up The Smart Lock By Touching

The Door Can Be Unlocked With Successful Two-factor Validation With Unlocking  
Password And Card.

#### Notes

Factory Setting Of The System Is Common Mode; When Restored To Factory  
Setting, The System Will Have Settings Of Safe Mode. In Safe Mode, If Any Of  
The Two Factors Is Incorrectly Entered, Both Of Them Shall Be Re-entered.  
Same As The Fingerprint Password Lock, If Input Errors Occur 10 Times Within  
5 Minutes, The System Will Be Locked For 5 Minutes.

### 6.3 Set Your Password Card Lock

#### How To Enter Management Mode

Method 1: Wake Up The Smart Lock By Touching; Then Press "\*" And Enter  
Unlocking Password And The Two-digit Administrative Password;  
Press # To Confirm And Enter Management Mode.

Method 2: Wake Up The Smart Lock By Touching; Then Press "\*" And Swipe  
The Management Card To Enter The Management Mode.

#### Voice Menu In Management Mode:

- ») press 1 to change unlocking password
- ») Press 2 to add card
- ») Press 3 to delete the card
- ») press 4 to change unlocking mode
- ») press 5 to change administrative password
- ») press 6 to Apply Join Internet of things
- ») press 7 to Apply Sign out Internet of things

### **Notes**

The System Will Automatically Exit Management Mode With No Operation Conducted Within 10 Seconds In System Management Mode.  
Press "\*" Button In The Management Mode To Return To The Previous Menu Until You Exit Management Mode.  
Factory Default For Unlock Is: 123456 And Default Administrative Password Is: 00 (please Change Them Timely In Your Initial Use).  
There Are Real Human Voice Prompts In The Whole Course In The Management Mode; Please Operate In Accordance With Voice Prompts For Specific Settings.

#### 6.4 Change Unlocking Password

Enter management mode and press 1 to select Change Unlocking Password; the unlocking password can be any figure of 4-8 digits; it shall be entered twice in the changing process; the new password entered will overwrite the original one.

#### 6.5 Add card

Enter management Mode And Press 2 To Select Add Card; When Entering Card Number, The Card Numbered 01-30 Will Be Added As A Management Card; The Card Numbered 31-99 Will Be Added As A Common User Card For Unlocking.

### **Notes**

1. One-card Function: Your Cell Card, Bus Card, City Card And Other Cards Can Be Added As A Card For Unlocking, So That You Do Not Need To Take With You An Extra Unlocking Card.
2. Card Capacity Is 64.

#### 6.6 Delete Card

Enter Management Mode And Press 3 To Select Delete Card; The Pull-down Menu Has: Press 1 For Deletion Of A Single Card; For Single-card Deletion, Deletion Can Be Realized By Swiping Card Or Entering Card Number; Press 2 For Deletion Of All; It Will Delete All Common User Cards For Unlocking, Excluding Management Cards Which Can Only Be Deleted Individually.

#### 6.7 Change Unlocking Mode

Enter Management Mode And Press 4 To Select Change Unlocking Mode; There Are Two Modes Of Common Mode And Safe Mode; When No Card Is Added To This Lock, It Cannot Be Set As The Safe Mode.

#### 6.8 Change Administrative Password

Enter Management Mode And Press 5 To Select Change Administrative Password; The Administrative Password Is Two-digit; The New Password Will Overwrite The Original One.

## 6.9 Join Internet of things

enter management mode according to button 6 for applying to join the internet of things, verified is ok.

### **Notes**

Join the ZIGBEE network, "restore factory settings" button to place LED lamp Wu red flash, successful entry into the ZIGBEE network, LED long bright light turns off after 2 seconds.

---

## 6.10 Sign out Internet of things

enter management mode according to button 7 for applying to exit the internet of things, verified is ok.

### **Notes**

Exit the ZIGBEE network, "restore factory settings" button to place LED lamp Wu red flash, successful exit, red LED lights flash 4 times after quenching.

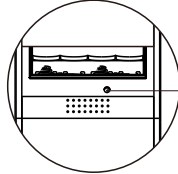
## ADVANCED FUNCTIONS AND EMERGENCY APPLICATIONS

### 7.1 Restore To Factory Setting

Inability To Enter Management Mode For Reasons Such As Accidental Forgetting Of Administrative Password By The User, The Smart Lock Can Be Initialized To Restore It To Factory Settings.

Specific Procedures Are As Follows:

When Power Is On, Poke The "key For Restoring To Factory Settings" And Hold On For Over 3 Seconds; Wait Until The Lcd Or Voice Prompt Shows "factory Settings Restored", Showing That The Lock Is Successfully Initialized.



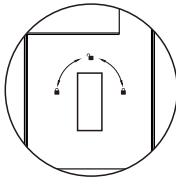
M series of  
recovery  
factory  
setting key  
position

INNER PANEL

#### Notes

When Factory Settings Are Restored, The Unlocking Password Will Be Restored To "1234546" And The Administrative Password Will Be Restored To "00"; All The Fingerprints Or Cards Already Added Will Be Deleted And Shall Be Added Again.

### 7.2 Double Lock Function

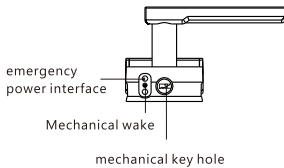


double lock function

#### Notes

Under Double Lock: The Inner Handle Cannot Be Pushed Down To Open The Door, Nor Can The Door Be Opened With Common Unlocking Password, Fingerprint, Card And Other Methods From Outdoor; However, The Door Can Be Opened With The Unlocking Password Together With The Administrative Password (no Dummy Digit Password Can Be Used Under Double Lock) Or Administrator Fingerprint Or Management Card.

### 7.3 Emergency Power Supply



Emergency Power Interface when Battery Voltage Is Lower Than 4.8v, Each Time The Smart Lock Is Waken Up, The System Will Prompt: "battery Low, Please Replace Battery"; At This Point The Battery Shall Be Replaced In Time (please Do Not Mix Batteries Of Different Types Or New And Used Batteries).

When The Battery Runs Out Of Power And The System Cannot Start, The 9v Laminated Cell Can Be Used And Directly Connected To The Emergency Power Interface At The Bottom Of The Front Panel; Then The System Can Be Started To Unlock The Door.

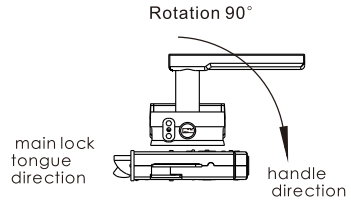
#### 7.4 Mechanical Wake

Unable to awaken intelligence lock, you can click the outer panel machinery wake key wakeup intelligent lock.

.....

#### 7.5 Unlock With Emergency Mechanical Key

M series mechanical key to the direction of insertion  
Rotate 90 degrees and then  
press the handle to open the  
door.



## 目 录

您的产品图解

如何安装您的智能锁

如何使用您的指纹密码锁

如何使用您的密码卡锁

高级功能与应急应用

ENGLISH  
PG 1-15

简体中文  
PG 16-27

配置清单  
Configuration List

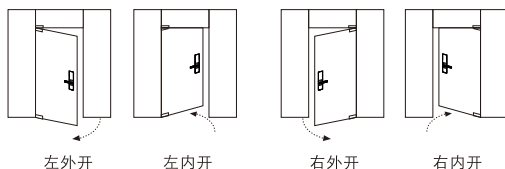
请在拆开包装箱后按清单仔细核对, 如发现有缺漏, 请及时向我们或代理商索取。

序号 Serial No.	名称 Name	每套数量 Quantity/lock	备注 Remark
1	外面板	1	
2	内面板	1	
3	锁体	1	
4	机械钥匙	2	
5	用户手册	1	
6	保修卡	1	
7	安装套件包	1	
8	5号电池	4	

# 安装智能锁 Installation Smart Lock

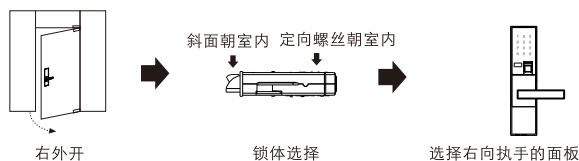
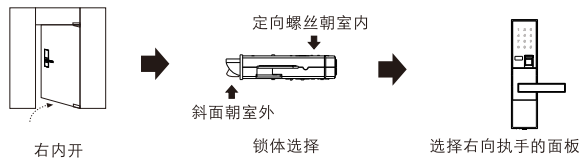
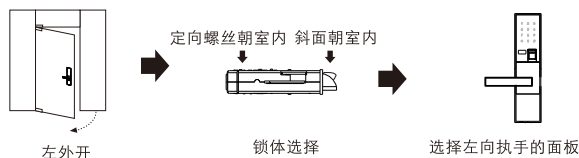
## 1 门开向判断 Door Opening-direction Judge

根据下列图示判断你的开门方向。



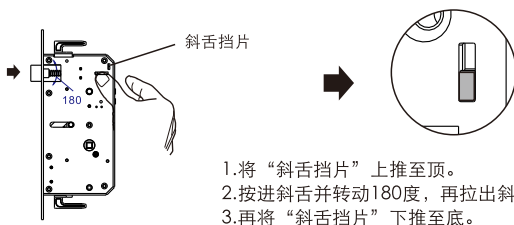
## 2 智能锁的选择 How to Select smart lock

本智能锁拥有四向合一功能，经调整可以适用于右外开、右内开、左外开、左内开，四种开向的门。

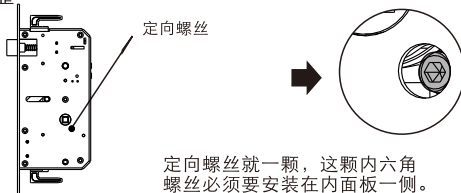


### 3 调整智能锁 Adjust smart lock

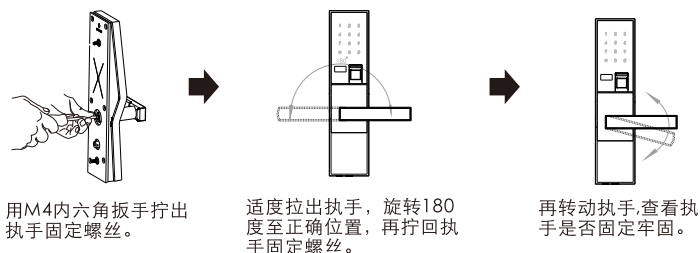
#### 3.1 斜舌调整



#### 3.2 定向螺丝调整

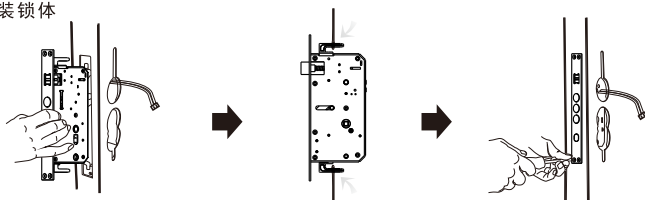


#### 3.3 执手调整



## 4 智能锁安装 Installation Smart Lock

### 4.1 安装锁体



将锁体放入按规定尺寸处理好的门扇内。把锁体内外面板连接线按标签提示分别朝门两侧穿出。

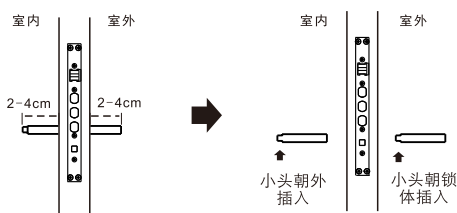
锁体插入时勾好上下天地杆。

旋紧锁体上的四颗固定螺丝。

注意事项:

连接线有内外之分, 请按标签提示选择正确的连接线朝门两侧穿出, 请勿穿错。

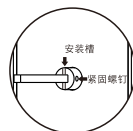
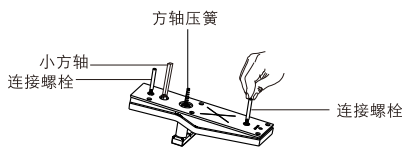
### 4.2 插入方轴



选择适合长度的大方轴（长度为方轴插入锁体后露出门面2-4CM）。

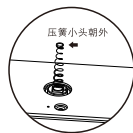
朝正确的方向插入大方轴。

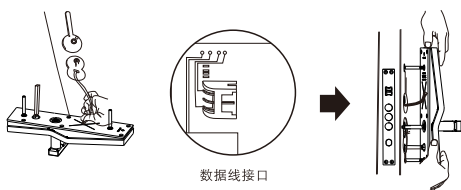
### 4.3 安装外面板



安装槽必须垂直放置。

1. 在外面板上旋好两条连接螺栓。
2. 并插好4x4机械钥匙小方轴并用紧固螺钉固定紧小方轴（小方轴以能穿入锁体1-2CM为宜，过长裁剪）。
3. 并在执手方轴口放好方轴压簧（压簧小头朝外）。



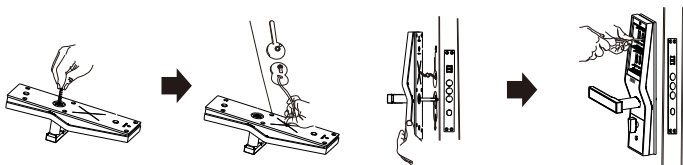


将锁体外面板连接线插入外面板接口。

将外面板执手口对准大方轴，小方轴对准机械钥匙口一起插入。

**注意事项：**  
 连接线有内外之分，请按标签提示选择正确的连接线插入，请勿插错。

#### 4.4 安装内面板

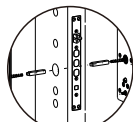


在内面板的执手方轴口放好压簧，压簧小头朝外。

将锁体内面板连接线插入内面板接口，连接牢固后，再将内面板执手口对准锁体上的大方轴插入。

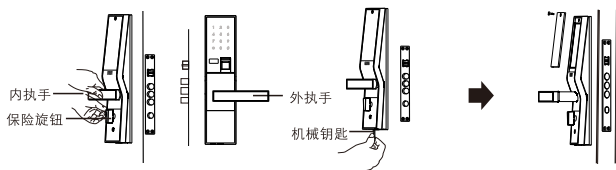
将内外面板与门贴紧，旋紧两颗内外面板连接螺丝。

**注意事项：**  
 因为智能锁两根方轴是前后对插，所以保持两根方轴同心，内外面板的方轴孔和锁体方轴孔三孔同心非常重要，它将直接影响到执手的转动手感，因此要特别注意三孔同心。



三孔同心

#### 4.5 完成安装



拧动内外执手和保险旋钮，机械钥匙，检查各部件是否连接完好。

装好电池，盖好电池盖，智能锁即安装完成。

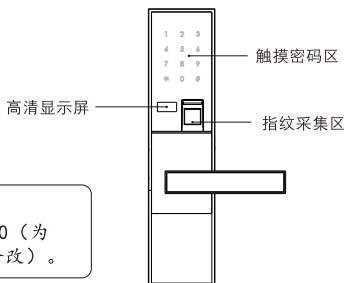
## 使用智能锁 Smart Lock

### 5.1 用密码开锁

触摸任意键即唤醒指纹锁，  
输入密码验证成功即可开门。

### 5.2 用指纹开锁

按指纹验证成功即可开门。



#### 注意事项:

出厂开门密码为123456，管理密码为00（为了你的安全，在你初次使用时请及时修改）。

注意事项：在用指纹或密码开锁时，如果在5分钟内连续输入不正确密码或指纹10次（双项累计），系统将锁定5分钟（此时任何操作，系统提示：系统已锁定）；锁定期间按任何密码或其他操作都会把锁定时间恢复为最大锁定时间；不要有任何输入，5分钟后可以正常使用。

#### 关于虚位密码

##### About the empty spaces password

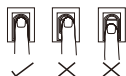
防窥视密码保护功能：为了避免他人窥视，在输入密码时，可以在有效密码前后添加任何数字（总长不超过32位，超过32位后自动溢出）仍可验证成功开锁。

#### 指纹输入要领

##### Essentials for fingerprint input

采集、验证指纹时请正确放置手指。

方法：把手指放在指纹采集区，力度适中，尽量平放，如下图：



1.将手指放置于指纹采集区中心。



2.轻压保持手指指纹面与采集区完全贴合。



3.手指保持平稳，维持片刻。

### 5.3 设置您的指纹密码锁

如何进入管理模式

方法一：唤醒指纹锁，按\*号键再输入开门密码加两位管理密码按#号确认，进入管理模式。



#### 注意事项:

系统在管理模式下10秒钟无任何操作，系统将自动退出管理模式。

管理模式下按“\*”号键可返回上级菜单，直至退出管理模式。

管理模式下全程高清液晶提示，具体设置请按液晶提示操作。

方法二：唤醒指纹锁，按\*号键再输入管理者指纹，进入管理模式。

#### 5.4 添加指纹

进入管理模式按1选择用户管理,再按1选择添加指纹。

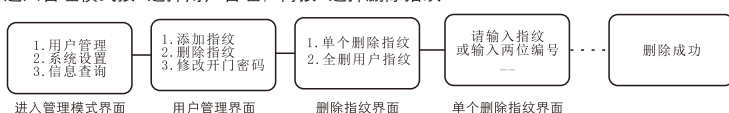


注意事项:

1. 在输入指纹编号时, 输入01-10时为管理指纹; 输入11-50时为主人指纹, 输入51-99时为客人指纹。
2. 管理指纹: 除正常开锁外, 还可进入管理程序和开反锁; 主人指纹: 除正常开锁外还可以开反锁; 客人指纹只能正常开锁。
3. 指纹容量为99枚。

#### 5.5 删除指纹

进入管理模式按1选择用户管理, 再按2选择删除指纹。

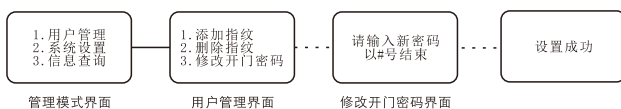


注意事项:

全删用户指纹时, 将删除全部普通用户指纹 (即编号11-99的指纹, 主人指纹和客人指纹), 但不删除管理者指纹, 管理者指纹可以单个删除。

#### 5.6 修改开门密码

进入管理模式按1选择用户管理, 再按3选择修改开门密码。

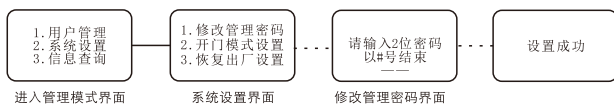


注意事项:

在修改过程中需输入两次 (开门密码可设置为4-8位任何数字)。

#### 5.7 修改管理密码

进入管理模式按2选择系统设置, 再按1选择修改管理密码。



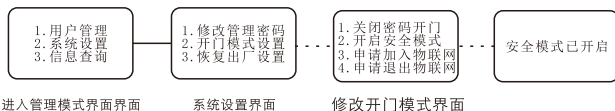
#### 5.8 开启/关闭密码开门

进入管理模式按2选择系统设置, 再按2选择开门模式设置。



### 5.9 开启/关闭安全模式

进入管理模式按2选择系统设置,再按2选择开门模式设置,再2选择开启或关闭安全模式。

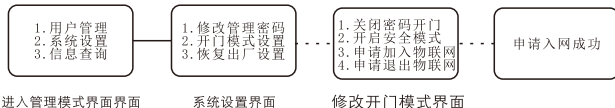


#### 注意事项:

1. 当指纹库为空或关闭密码开门时, 无法开启安全模式。
2. 在安全模式下, 清空所有指纹或关闭密码开门, 会自动退出安全模式。

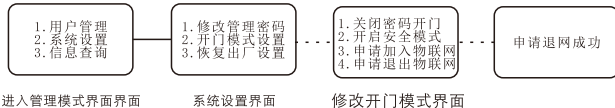
### 5.10 申请加入物联网

进入管理模式按2选择系统设置,再按2选择开门模式设置,再按3选择申请加入物联网。



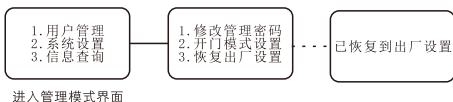
### 5.11 申请退出物联网

进入管理模式按2选择系统设置,再按2选择开门模式设置,再按4选择申请退出物联网。



### 5.12 恢复出厂设置

进入管理模式按2选择系统设置, 再按3选择恢复出厂设置。

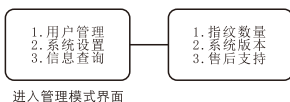


#### 注意事项:

恢复出厂设置以后, 开门密码恢复为"123456", 管理密码恢复为"00"; 所有已添加的指纹或卡片都会被清除包括管理卡、管理指纹, 需要重新添加。

### 5.13 信息查询

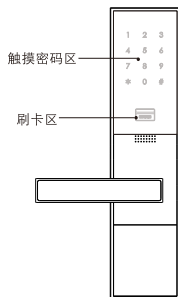
进入管理模式按3选择信息查询;再按1选择查询指纹数量, 按2选择查询系统版本, 按3选择查询售后支持。



## 使用密码卡锁 password card lock

### 6.1 常用模式下

- 用密码开锁  
触摸唤醒智能锁。  
输入密码验证成功即可开门。
- 用卡片开锁  
刷卡片验证成功即可开门。



#### 注意事项:

出厂时默认开门密码为：123456，默认管理密码为：00（初次使用时请及时修改密码）。本锁在输入密码开锁时和指纹密码锁一样具有虚位密码防窥视功能。

### 6.2 安全模式下开锁

- 触摸唤醒智能锁。  
输入开门密码和卡片双重验证成功，方可开锁。

#### 注意事项:

系统出厂设置为常用模式，恢复出厂设置时，系统将删除安全模式设置。在安全模式下，输入过程中有一项输入错误，则需要重新输入两项。同指纹密码锁一样，5分钟内输入错误10次，系统会锁定5分钟。

### 6.3 设置您的密码卡锁

#### 如何进入管理模式

- 方法一：触摸唤醒智能锁，按\*号键再输入开门密码加两位管理密码按#号确认，进入管理模式。
- 方法二：触摸唤醒智能锁，按\*号键再刷一下管理卡，进入管理模式。

- 管理模式下语音菜单：
- 按1修改开门密码
  - 按2添加卡片
  - 按3删除卡片
  - 按4修改开门模式
  - 按5修改管理密码
  - 按6申请加入物联网
  - 按7申请退出物联网

**注意事项：**

系统和管理模式下10秒钟无任何操作，系统将自动退出管理模式。  
管理模式下按“\*”号键可返回上级菜单，直至退出管理模式。  
管理模式下全程真人语音提示，具体设置请按语音提示操作。

**6.4 修改开门密码**

进入管理模式按1选择修改开门密码；开门密码可以是4-8位任意数字；在修改过程中需输入两次；输入的新密码会覆盖原密码。

.....

**6.5 添加卡片**

进入管理模式按2选择添加卡片；在输入卡片编号时，输入01-10编号的卡即被添加为管理卡；11-99编号的卡为普通用户卡。

**注意事项：**

1. 一卡通功能：可以将你已有的小区卡、公交卡、城市卡等添为开门卡，让你不用额外再带开门卡。
  2. 卡片容量为64张。
- .....

**6.6 删除卡片**

进入管理模式按3选择删除卡片；再下一级菜单有：按1单张删除，单张删除时可以刷卡或输入卡片编号两种方式删除；按2全部删除，将全部删除所有普通开门用户卡，但不包括管理卡，管理卡只能单张删除。

.....

**6.7 修改开门模式**

进入管理模式按4选择修改开门模式；有常用模式和安全模式两种；当本锁未添加任何卡片时无法设置为安全模式。

.....

**6.8 修改管理密码**

进入管理模式按5选择修改管理密码；管理密码为两位，新密码会覆盖原密码。

.....

**6.9 加入物联网**

进入管理模式按6申请加入物联网，验证通过即可。

**注意事项：**

加入ZigBee网络时，“恢复出厂设置键”位置处LED灯呈红色闪烁，成功加入ZigBee网络后，LED灯长亮2秒后熄灭。

.....

**6.10 退出物联网**

进入管理模式按7申请退出物联网即可。

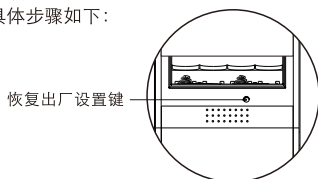
**注意事项：**

退出ZigBee网络时，“恢复出厂设置键”位置处LED灯呈红色闪烁，成功退网后，LED灯呈红色闪烁4次后熄灭。

### 7.1 恢复出厂设置

用户如不慎遗忘管理密码等原因,无法进入管理模式。可以初始化智能锁,使之恢复到出厂设置。

具体步骤如下:

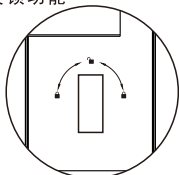


在通电的情况下,用细木棒捅住内面板“恢复出厂设置键”保持3秒以上,等待语音提示“已恢复到出厂设置”即表示本锁已初始化成功。

#### 注意事项:

恢复出厂设置以后,开门密码恢复为“123456”,管理密码恢复为“00”;所有已添加的指纹或卡片都会被清除,需要重新添加。

### 7.2 反锁功能



反锁功能

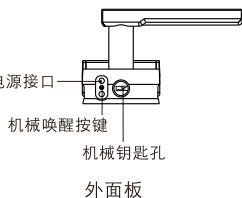
#### 注意事项:

在反锁情况下:内执手无法下压开门,在室外同样无法用普通开门密码、卡片等方式开锁,但可以用开门密码加两位管理密码(反锁状态下开锁不能使用虚位密码)或者用管理卡开门。

### 7.3 应急供电

电池电压低于4.8伏时,系统在每次唤醒智能锁时将提示:“电量低,请更换电池”此时应及时更换新电池(请勿将不同型号、新旧电池混合使用)。

当电池电力耗尽,无法启动系统时,可使用9伏叠层电池,直接连接前面板下端的应急电源接口,即可启动系统再开门。



### 7.4 机械唤醒

无法正常唤醒智能锁时,可以按一下外面板机械唤醒按键唤醒您的智能锁。

### 7.5 应急机械钥匙开启

M系列插入机械钥匙到执手方向  
旋转90度再下压执手即可开门。

